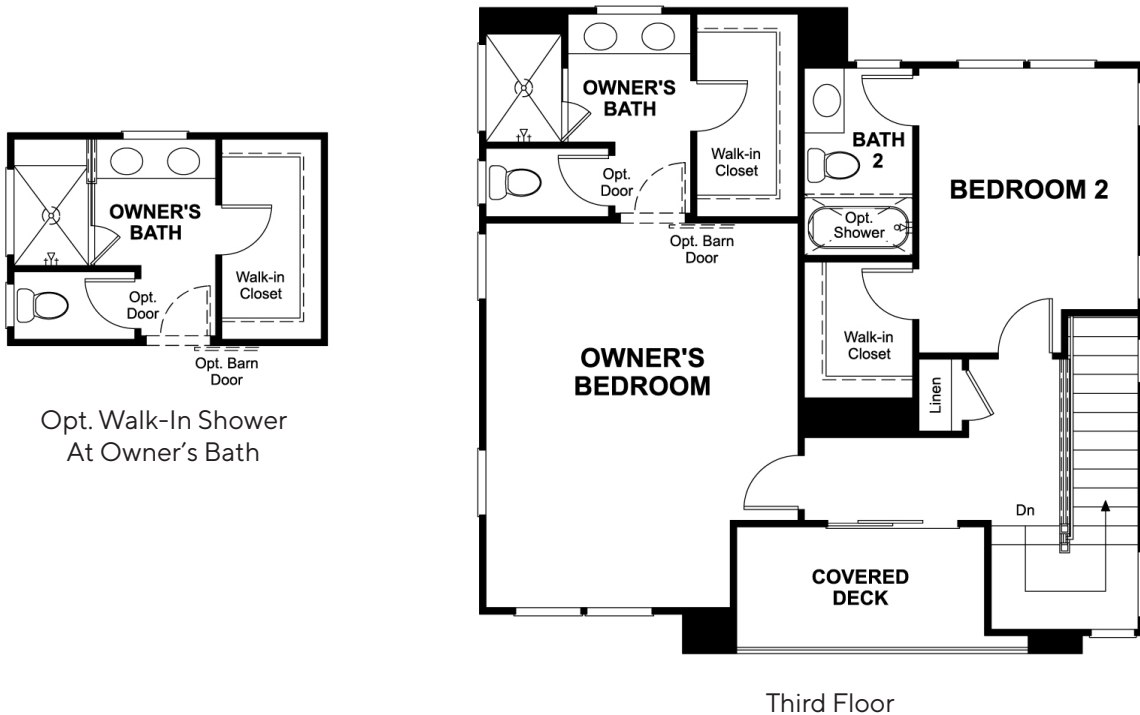


TORRIN

RICHMOND AMERICAN HOMES

Nevett Plan

Approx. 1,810 sq. ft. | 2-Story | 3 Beds | 3 Baths | 2-Bay Garage



Opt. Walk-In Shower
At Owner's Bath

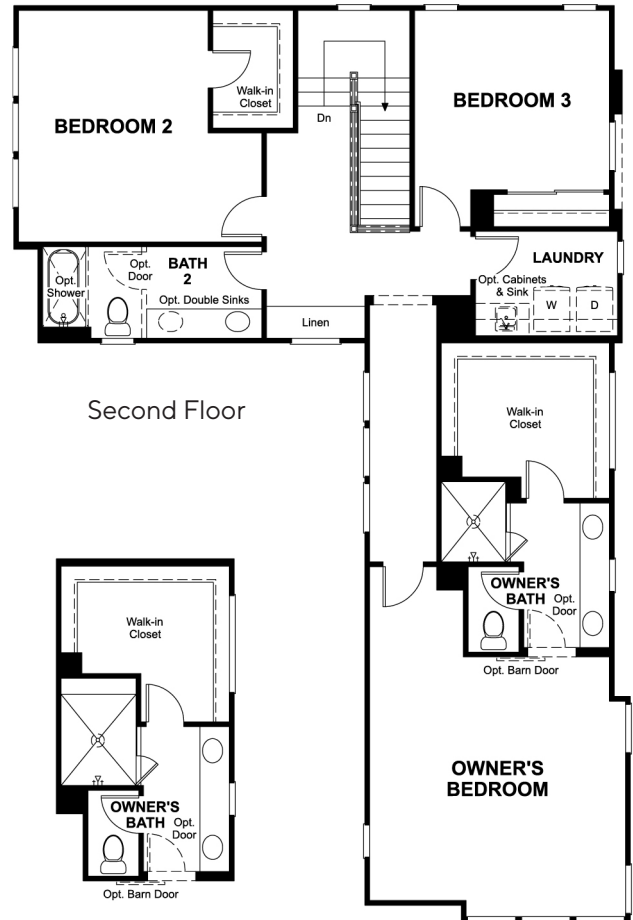
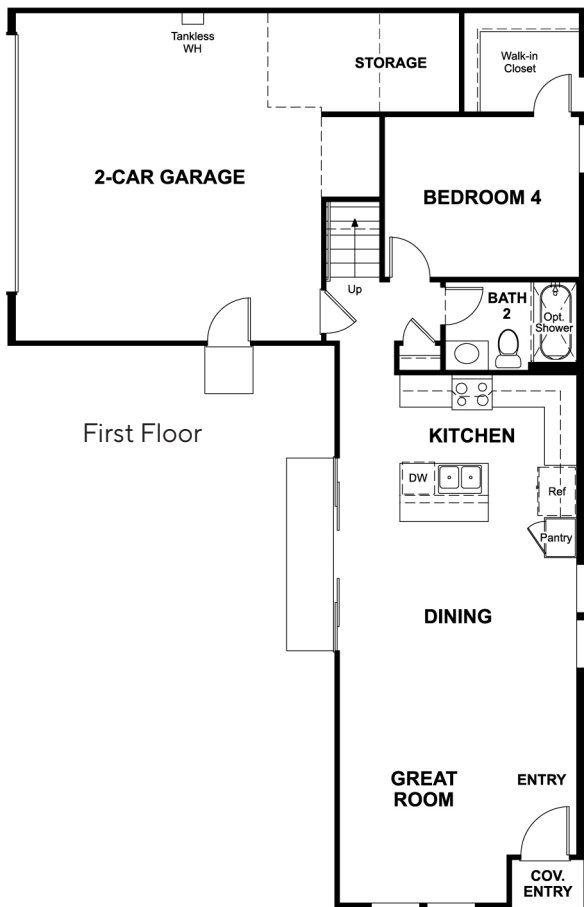
Third Floor

TORRIN

RICHMOND AMERICAN HOMES

Norton Plan

Approx. 2,080 sq. ft. | 2-Story | 4 Beds | 3 Baths | 2-Bay Garage



Opt. Owner's Bath
Walk-In Shower