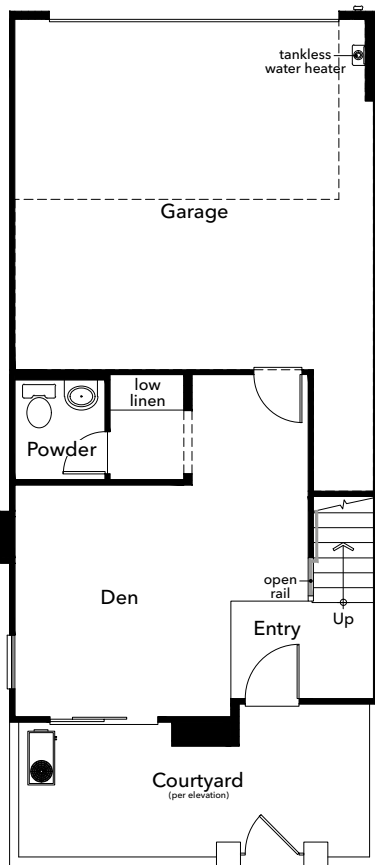


# CRIMSON

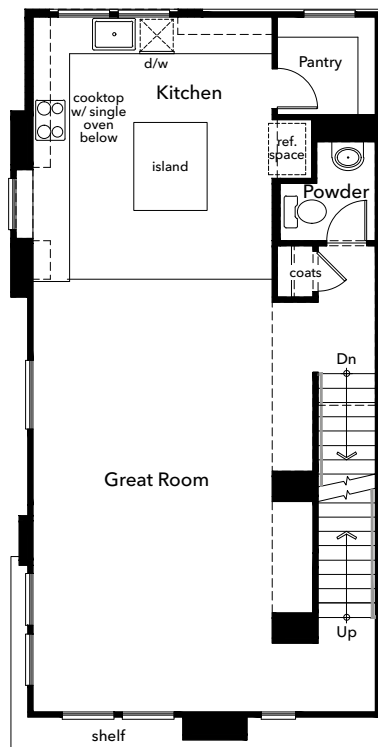
KB HOME

Plan 2054

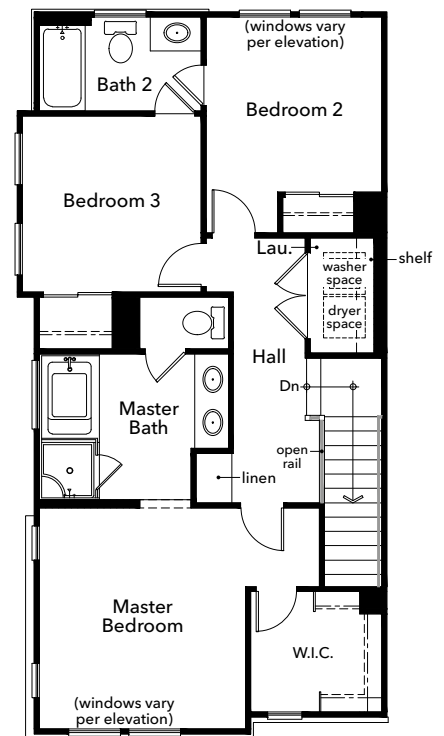
Approx. 2,054 sq. ft. | 3-Story | 3-4 Beds | 3-3.5 Baths | 2-Bay Garage



First Floor\*



Second Floor\*



Third Floor\*



\*Visit [KBhome.com](http://KBhome.com) to view additional options.



©2022 KB Home (KBH). Plans, pricing, financing, terms, availability and specifications subject to change/prior sale without notice and may vary by neighborhood, lot location and home series. Buyer responsible for all taxes, insurance and other fees. Special wall and window treatments, custom paint colors, photographs, upgraded floor coverings, furniture, landscaping, custom designed walks and patio treatments, and many other items featured in and around the model homes are decorator suggested, not included in the purchase price and not available for purchase. Windows, columns, porches and posts may vary per elevation and predetermined homesite. Renderings and floor plans are artist conceptions; sq. footage is approximate and based on design; area may vary according to construction; and landscaping shown is not standard. See sales counselor for details. 1866.321 - D3 - (4/22)

