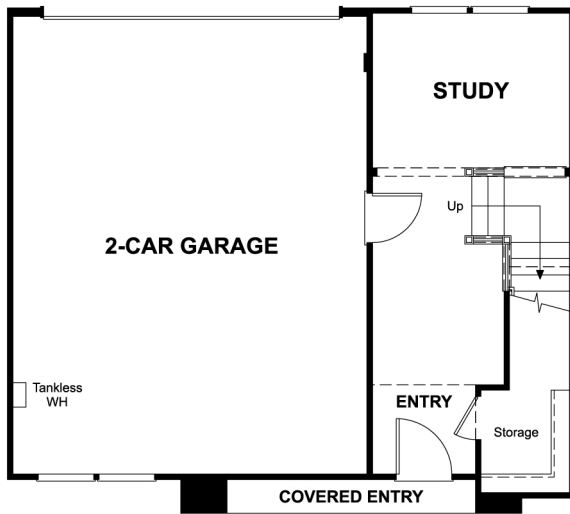


TORRIN

RICHMOND AMERICAN HOMES

Nevett Plan

Approx. 1,810 sq. ft. | 3-Story | 3 Beds | 3 Baths | 2-Bay Garage



First Floor



Second Floor



RichmondAmerican.com



Floor plans and renderings are conceptual drawings and may vary from actual plans and homes as built. Options and features may not be available on all homes and are subject to change without notice. Actual homes may vary from photos and/or drawings which show upgraded landscaping and may not represent the lowest-priced homes in the community. Features may include optional upgrades and may not be available on all homes. Prices, specifications and availability are subject to change without notice. Square footage is approximate and subject to change without notice. ©2023 Richmond American Homes, Richmond American Homes of Maryland, Inc., California Department of Real Estate - Real Estate Broker, Corporation License Number 01842595. (2/23)

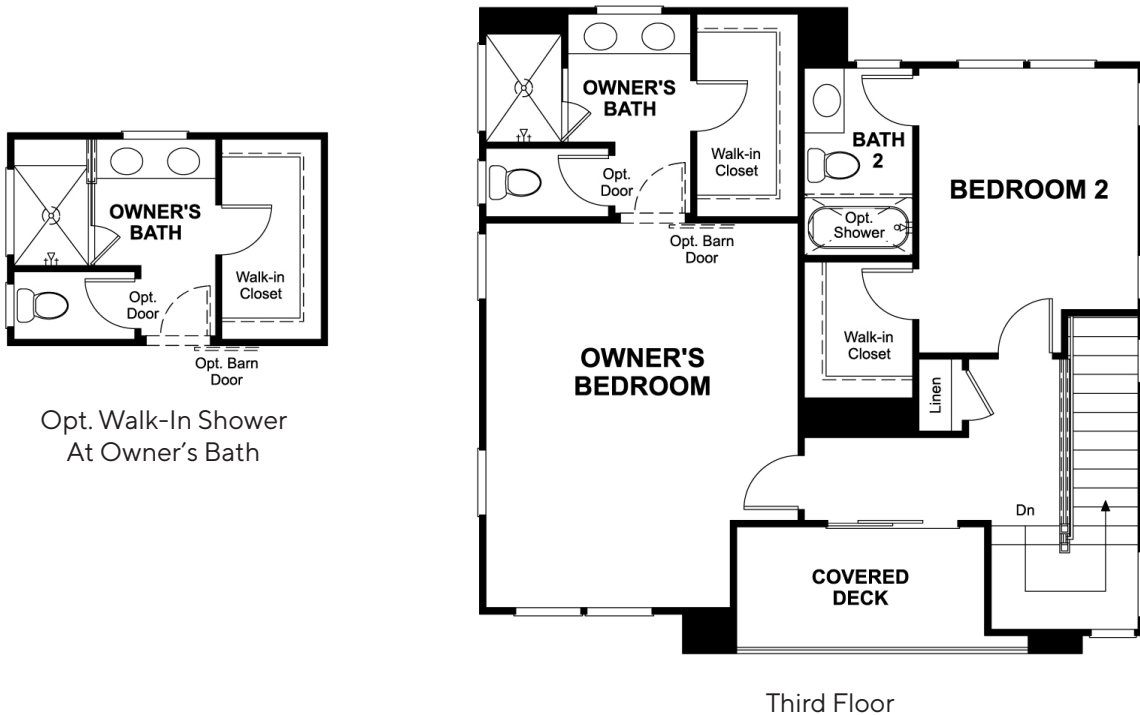


TORRIN

RICHMOND AMERICAN HOMES

Nevett Plan

Approx. 1,810 sq. ft. | 3-Story | 3 Beds | 3 Baths | 2-Bay Garage



RICHMOND AMERICAN HOMES | RichmondAmerican.com

Valencia
FIVEPOINT

Floor plans and renderings are conceptual drawings and may vary from actual plans and homes as built. Options and features may not be available on all homes and are subject to change without notice. Actual homes may vary from photos and/or drawings which show upgraded landscaping and may not represent the lowest-priced homes in the community. Features may include optional upgrades and may not be available on all homes. Prices, specifications and availability are subject to change without notice. Square footage is approximate and subject to change without notice. ©2023 Richmond American Homes, Richmond American Homes of Maryland, Inc., California Department of Real Estate - Real Estate Broker, Corporation License Number 01842595. (2/23)